

102
49

128

Frühlingstraum.

Gedicht von Rud. Laismann von Prast.

Musik

von

Anselm Hüttenbrenner

1855.

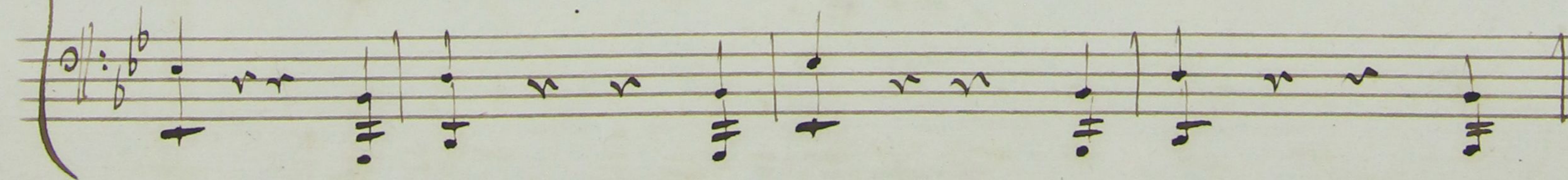
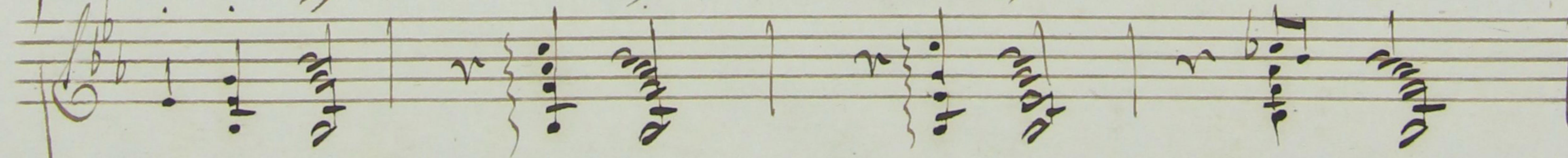
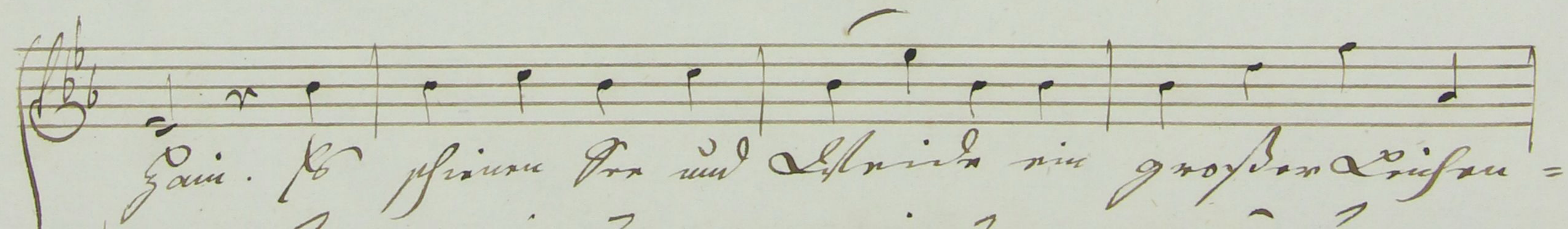
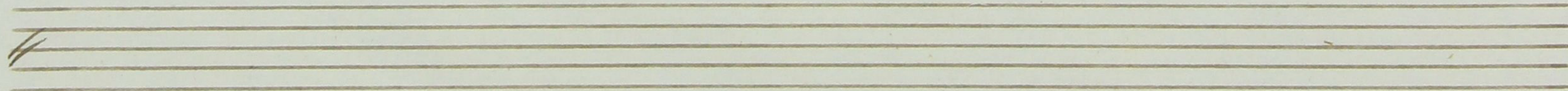
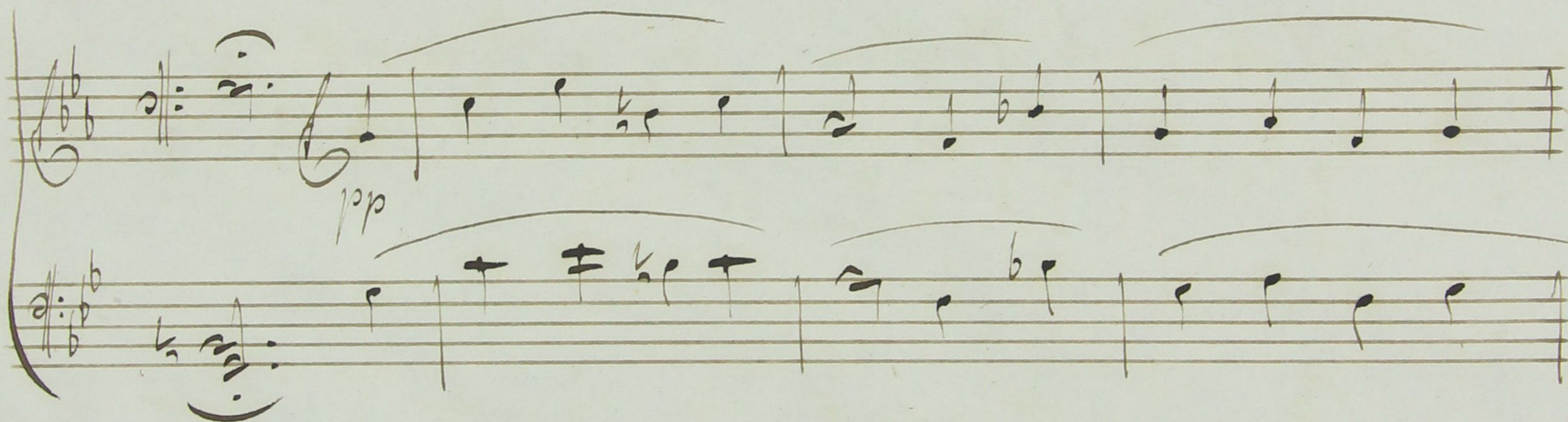
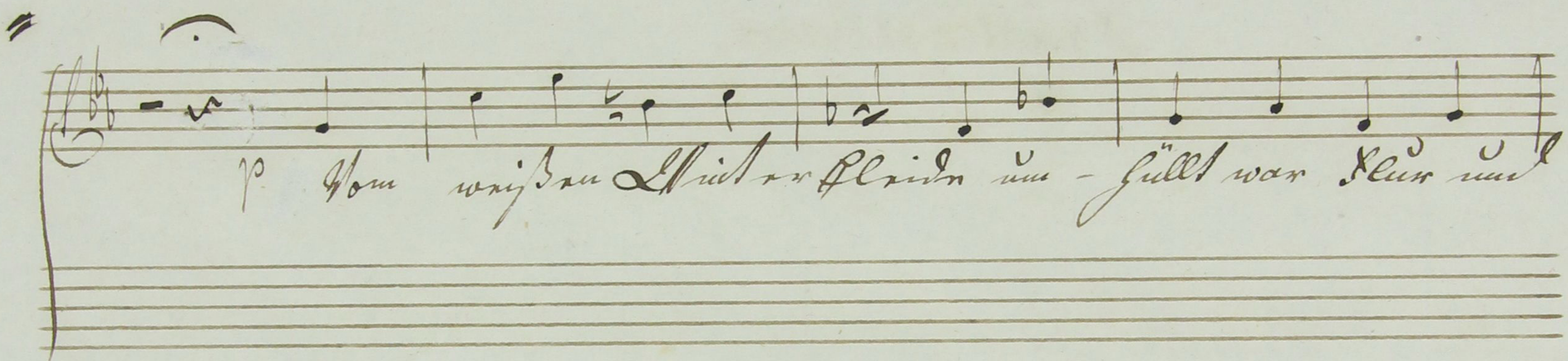
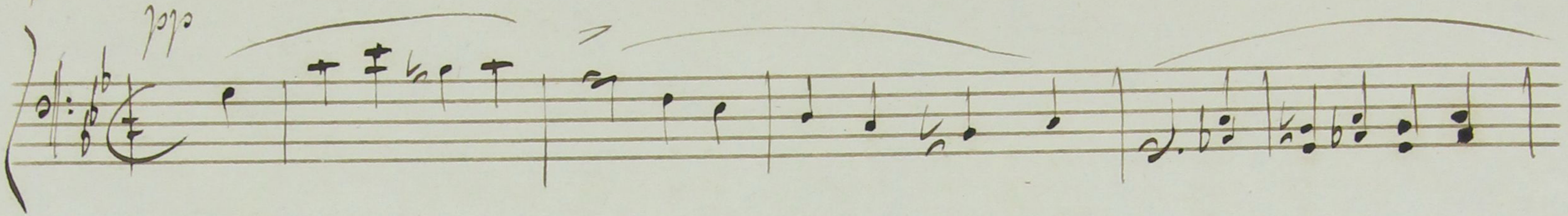
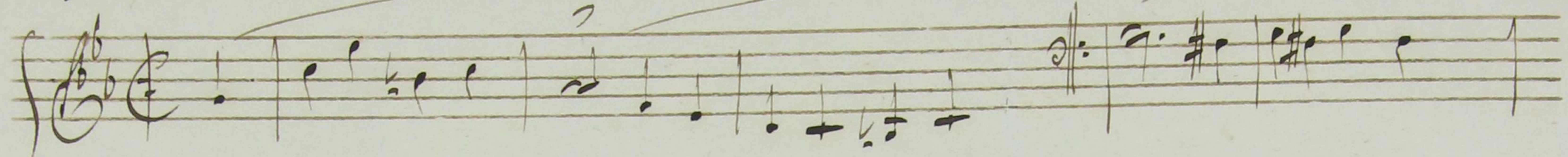
Harburg.

Rome MPM 01131

2.

Gedicht von Baron Rast.
Moderato.

Musik von Anselm Hüttenbrenner
Frühlingstraum. Marburg am 1. März 1855.



13. Suite pour le Clavier de Lully

Handwritten musical score for the first system, consisting of three staves. The top staff contains the vocal line with lyrics: "Ain; et sicut per unum spiritum in gloriam". The middle staff is the right-hand keyboard part, and the bottom staff is the left-hand keyboard part. The music is in a minor key and features various rhythmic values and ornaments.

Handwritten musical score for the second system, consisting of three staves. The top staff contains the vocal line with lyrics: "Li - san - ctum." followed by "dimin:". The middle staff is the right-hand keyboard part, and the bottom staff is the left-hand keyboard part. The music concludes with a double bar line and the initials "P. S." written to the right.

Allegretto.

1. Die Nacht war silberhell, so
 2. Die Nacht war silberhell, so
 2. Die Nacht war silberhell, so

1. Die Nacht war silberhell, so
 2. Die Nacht war silberhell, so

1. Die Nacht war silberhell, so
 2. Die Nacht war silberhell, so

1. So kam sie goldnen
2. Lied alle Vogel

resc. *ppp*

1. Außer, und rüßte die Lümm auß, und gab, daß er - pin
2. sangen be - freit von Schützengewalt, und Vogelstim - men

1. la - be, dem Kaiser frei - zu Lauf.
2. Augen mir freudig in - der Hand

mf

V. S.

Handwritten musical score for the first system. It consists of a vocal line (treble clef) and piano accompaniment (grand staff). The piano part includes chords and melodic lines with various dynamics and articulation marks.

Handwritten musical score for the second system. The vocal line begins with the lyrics "Gib Leben Dir". The piano accompaniment features a "dimin." (diminuendo) marking and a "pp" (pianissimo) dynamic. The tempo is marked "Moderato".

Handwritten musical score for the third system. The vocal line contains the lyrics "Kunde, so ist dem Winter gleich. Lass dir ein Brüstling". The piano accompaniment continues with chords and melodic lines.

wirden, *sfz* Gott Dein Gmüthreich, daß Du ein Drüßling

wirden, *sfz* Gott Dein Gmüthreich. *a tempo*

colla parte

Dimin:

ritard: *pp* *Fine.*

